

WAVE TO SMAF Converter

# WSC-MA2

Users Manual Ver 1.1.0



## <Contents>

<b>Introduction</b> ----- About WSC-MA2.....	3
1. Outline of WSC-MA2.....	3
2. About this Document .....	3
<b>Chapter 1</b> ----- Prepare Before Use .....	4
1. Operation Environment.....	4
2. Setup .....	4
<b>Chapter 2</b> ----- Basic Usage .....	5
1. Preparation of WAVE file.....	5
2. Starting of WSC-MA2 .....	5
3. Creates SMAF.....	5
<b>Step 1</b> .....	5
<b>Step 2</b> .....	6
<b>Step 3</b> .....	6
<b>Chapter 3</b> ----- Detailed Function.....	7
1. Main Dialog .....	7
2. Option Setting Dialog .....	7
3. Message Dialog.....	8
4. Version Information Dialog .....	9
<b>Appendix</b> .....	10
1. Error Message and Its Measures .....	10
2. FAQ.....	11

## <<Revision>>

Ver	Date	Description
1.0.0	12/18/2002	Newly released
1.1.0	2/18/2003	Description about the maximum size of input WAVE file was corrected.

- Copyright of this document is the property of YAMAHA Corporation.
- Transfer or copying of this document in part or in whole requires the permission of Yamaha Corporation.
- The contents of this document are subject to change without notice.

# Introduction ----- About WSC-MA2

## 1. Outline of WSC-MA2

WSC-MA2 is an application software that creates “Synthetic music Mobile Application Format” (SMAF) from the existing WAVE file.

By using WSC-MA2, you can create your original ringing melody easily for mobile phone from WAVE file.

## 2. About this Document

This document is a Users manual for WSC-MA2. This describes the setup of WSC-MA2, the basic usage and the guideline for creating SMAF etc.

This configuration is as follows. Please read from chapter that you need.

**Setup Method** -----→ Chapter 1 [Prepare Before Use](#)

**Try to Use** -----→ Chapter 2 [Basic Usage](#)

**Detailed Usage** -----→ Chapter 3 [Detailed Functions](#)

# Chapter 1 ----- Prepare Before Use

Explains the required preparation before you use WSC-MA2.

## 1. Operation Environment

WSC-MA2 operates in the following environment.

<b>OS</b>	Windows <sup>®</sup> 98SE, Windows <sup>®</sup> 2000, Windows <sup>®</sup> XP
<b>CPU</b>	MMX Pentium <sup>®</sup> 233Mhz or more or its compatible processor
<b>Memory</b>	64MB or more
<b>Hard disk</b>	More than 10MB

## 2. Setup

The installer program is not included in WSC-MA2. Please uncompress the acquired file to a suitable place. The uncompressed folder includes this manual and execute file.

## Chapter 2 ----- Basic Usage

The ringing melody for mobile phone can be created easily if you use WSC-MA2. Here, describes the actual flow, using example.

### 1. Preparation of WAVE file

For creating SMAF using WSC-MA2, it is necessary to prepare WAVE file (\*.wav) which fulfills the following conditions.

Sampling Frequency	: 8kHz or 4kHz
Sampling Bit number	: 16 bit
Channel number	: 1 (mono)

The size of WAVE file to input does not have restriction. However, in the case of contents which playback time exceeds 66 seconds, the data after 66 seconds is not set as the playback object in created SMAF. In order to create SMAF with sufficient data efficiency, we recommend you to input the file, which playback time is less than 66 seconds. (Standard file size : When its sampling frequency is 8kHz, it is about 1MB. When it is 4kHz, about 500KB)

### 2. Starting of WSC-MA2



Double-click EXE file or its shortcut icon.

**NOTE!!**

It can also start from “Run” (Type the name of a program) and command prompt.

### 3. Creates SMAF

#### Step 1



Drag and drop WAVE file to main dialog displayed after start. Here, an example shows procedure of creating SMAF from a file “CoolGuitar.wav”.

## Step 2

If WAVE file has no problem, then, “Information setting dialog” is displayed. In the initial state, the character string which removes extension from the input file name is inputted as title. Press the “OK” button, as it is, here.



## Step 3



When the conversion is ended, a message dialog is displayed and the size of SMAF file is informed. SMAF file “CoolGuitar.mmf” is created in the same folder as original WAVE file.

### NOTE!!

SMAF created by WSC-MA2 can be played by transferring it to your mobile phone. If you use ATS-MA2-SMAF and ATS-MA3 that can be downloaded from [SMAF GLOBAL](#), you can play the SMAF on your PC also.

As things mentioned above, the operation flow of WSC-MA2 was explained. The general WAVE files can be converted with same method. However, please pay attention to the following 2 points to create SMAF smoothly.

✓ ***Does the WAVE file fulfill the specified requirements?***

The WAVE file, which does not fulfill the requirements shown in "[Preparation of WAVE file](#)", cannot be converted by WSC-MA2. It is necessary to change the format by WAVE file edit software beforehand.

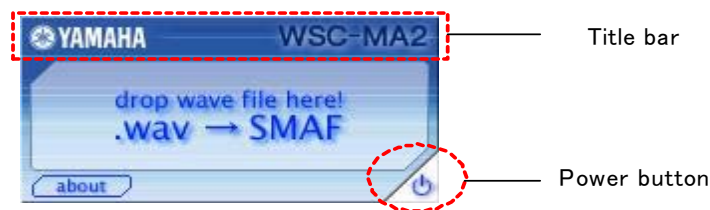
✓ ***Please confirm the maximum of file size which can be treated by your mobile phone.***

The upper limit of the file size which can be treated with carriers or mobile phone is different. Therefore, even if the SMAF is created from WAVE file which fulfilled the specified requirements, the file may be unable to be transferred to the mobile phones. Or even if the file can be transferred, it may be unable to be played. If the size exceeds your phone specification, please make its size smaller by adjusting the length of original WAVE file and down sampling.

## Chapter 3 ----- Detailed Function

The basic operation method and its flow were explained in Chapter 2. The details of specification and function of individual dialog that constitute WSC-MA2 are described here.

### 1. Main Dialog



This dialog is displayed first after the start of WSC-MA2.

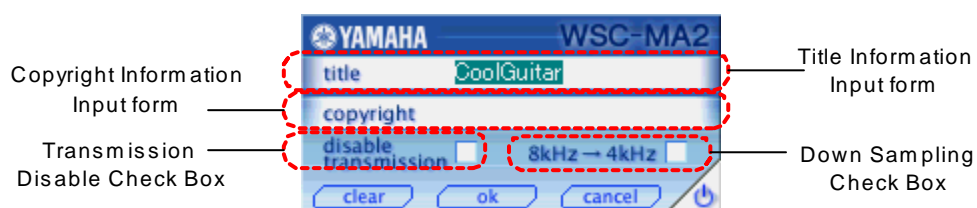
WAVE file can be input by dropping on the icon.

From the “about” button, the Version information dialog can be called.

And, the common functions for all dialogs are as follows.

- ☐ Can move the dialog by dragging Title bar.
- ☐ Can end WSC-MA2 by power button.

### 2. Option Setting Dialog



When the WAVE, file which is dropped on the main dialog, fulfills the conversion requirement, it is displayed. In this dialog, you can edit the various option information to include it into SMAF. And it is possible to set the down sampling for decreasing data size.

☐ **Title Information Input Form**

Input the title information to add to SMAF. In the initial condition, the character string which except the extension “\*.wav” from the input file name is set.

☐ **Copyright Information Input Form**

Input the copyright information to add to SMAF.

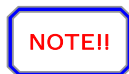
☐ **Untransferable Setting Check Box**

Set the limitation of the secondary transfer from the mobile terminal to another mobile terminal. When the checkmark is put in the checkbox, it is set to untransferable.

☐ **Downsampling Setting Checkbox**

Set it for down sampling. This setting item is valid only when the WAVE file whose sampling frequency is 8kHz is inputted. When it is put the checkmark in this checkbox, the down sampling is performed.

When the WAVE file whose sampling frequency is 4kHz is inputted, this checkbox becomes invalid, and it is outputted as it is.



Commonly, when the down sampling is performed, the data size becomes small but its sound quality is lost.

When you press the “clear” button, the above input information is cleared.

When you press the “ok” button, the input information is fixed and conversion processing into SMAF starts.

When you press the “cancel” button, the input information is canceled and it returns to the main dialog.

### 3. Message Dialog

2 kinds of message dialog exist according to the displayed situation.

☐ **Complete Message**





Informes that the conversion was completed normally.  
And the outputted SMAF size is displayed.

□ **Error Message**



When an error occurs in the process, the error message is displayed. The above image is an example that has problem in the inputted WAVE file.

**NOTE!!**

Refer to “[Error Message and Its measures](#)” of Appendix for the details and measure of the displayed error message.

In each case, when you press the “close” button, it returns to the main dialog.

#### 4. Version Information Dialog



The version of WSC-MA2 can be confirmed. And when you click the URL written by blue colored, [SMAF GLOBAL](http://smafyamaha.co.jp) is opened.

When you press the “close” button, it returns to the main dialog.

# Appendix

It describes that convenient information for using WSC-MA2 if you know it.

## 1. Error Message and Its Measures

If the error occurs on the way of conversion, the following messages are displayed.

Error message	The cause and measure
Cannot open WAVE file	The read of its WAVE file is not permitted or it is used already on the other application software. Please confirm the file attribute and check whether other application is using the WAVE file.
Extension is not ".wav"	Did you input the right WAVE file? (The files excepting WAVE are wrong.) Or, is the extension of file right? Please confirm the input file name.
Filename length exceeds limit	The name of inputted file exceeds the limitation of character number. Please shorten the file name.
Invalid WAVE file header	This extension is “.wav” but this file may not be WAVE form. Or this data is broken. Please prepare another WAVE file.
WAVE format not supported	The inputted WAVE files do not fulfill the conversion requirement. Confirm the format by referring Chapter 2 “ <a href="#">Preparation of WAVE file</a> ”.
Inadequate WAVE file playtime	WSC-MA2 cannot handle the WAVE file whose replay time is less than 20msec. Please prepare the file whose playback time should be longer than 20msec.
Cannot save SMAF file	The file of same name may exist in the state of read only. Or the write to folder may not be permitted. Please confirm the attribute of folder and file.

## 2. FAQ

- Q** I dropped some WAVE files to WSC-MA2, but only one SMAF can be created.
- A** Only one WAVE file can be inputted at one time. When you select and drop two or more files, only one file, which is under the mouse cursor, becomes the target of conversion. When you would like to create some SMAF, it is necessary to convert WAVE files one by one.
- Q** I created the new SMAF file, but file created before cannot be seen.
- A** The outputted file name of SMAF becomes same, but only this extension is replaced from “.wav” of original WAVE file to “.mmf”. When the SMAF file of same name has already existed, it is overwritten and saved. Therefore, about the important SMAF, it is necessary to change that name or move to another folder beforehand.
- Q** The characters overflow the window and its layout looks worse.
- A** Please set the font size to “small font” from the property of window. It cannot be displayed nicely by the font size excepting “Normal size (96dpi)”.